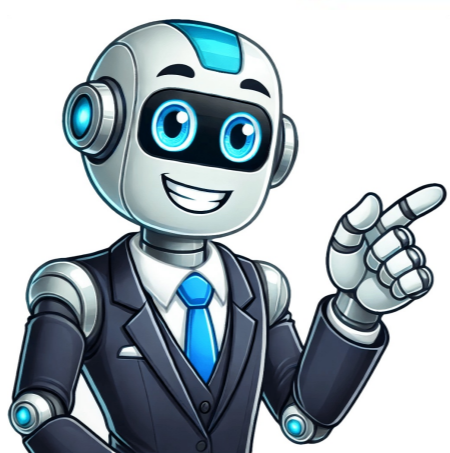


Continue































Skip to content Swirl marks on a car's paint job can be a frustrating and unsightly issue for many car owners. These marks, also known as holograms or buffer trails, are caused by the improper use of polishing or buffing tools, which create a series of tiny scratches on the paint surface. Not only do swirl marks detract from the appearance of the car, but they can also compromise its protective clear coat, making it more susceptible to damage from the elements. In this comprehensive guide, we will explore the causes of swirl marks, the best methods for removing them, and provide tips for preventing their occurrence in the future.

**Understanding Swirl Marks**Swirl marks are a common problem for car owners, but many are unaware of the causes behind them. To understand how to remove swirl marks, it's essential to grasp the underlying reasons for their formation. Swirl marks are typically caused by the improper use of polishing or buffing tools, which can create a series of tiny scratches on the paint surface. This can occur when using a buffer or polisher with a loose or worn-out pad, or when applying too much pressure or using the wrong type of polish. There are several types of swirl marks, including:

- Holograms:** These are small, circular swirl marks that can appear on the paint surface.
- Buffer trails:** These are longer, more linear swirl marks that can appear on the paint surface.

**Polish trails:** These are swirl marks that can appear on the paint surface due to the improper use of polish. Preventing Swirl Marks Preventing swirl marks is easier than removing them. By following a few simple tips, you can help prevent swirl marks from occurring in the first place. Here are some tips for preventing swirl marks: Use the right polishing or buffing tool: Make sure to use a high-quality polishing or buffing tool with a clean and well-maintained pad. Apply the right amount of pressure: Apply gentle pressure when using a polishing or buffing tool to avoid creating swirl marks. Use the right type of polish: Use a high-quality polish that is specifically designed for your car's paint type. Regularly maintain your car's paint: Regularly washing and waxing your car can help prevent swirl marks from occurring. Removing Swirl Marks Removing swirl marks can be a challenging task, but it's not impossible. By following the right steps and using the right tools, you can remove swirl marks and restore your car's paint job to its former glory. Here are the steps for removing swirl marks: (See Also: How to Remove Plastic Wrap from Car? Easy Steps) Clean the paint surface: Before attempting to remove swirl marks, make sure to clean the paint surface thoroughly with a mild soap and water solution. Apply a polish or compound: Apply a high-quality polish or compound to the affected area and work it in using a circular motion. Use a buffer or polisher: Use a buffer or polisher with a clean and well-maintained pad to work the polish or compound into the paint surface. Inspect the paint surface: After completing the above steps, inspect the paint surface to see if the swirl marks have been removed. Repeat the process as needed. If the swirl marks are still present, repeat the process until they are removed. Using a Polishing Compound to Remove Swirl Marks Using a polishing compound can be an effective way to remove swirl marks from your car's paint job. A polishing compound is a type of product that is designed to remove imperfections and imperfections from the paint surface. Here are the steps for using a polishing compound to remove swirl marks: Clean the paint surface: Before attempting to use a polishing compound, make sure to clean the paint surface thoroughly with a mild soap and water solution. Apply the polishing compound: Apply the polishing compound to the affected area and work it in using a circular motion. Use a buffer or polisher: Use a buffer or polisher with a clean and well-maintained pad to work the polishing compound into the paint surface. Inspect the paint surface: After completing the above steps, inspect the paint surface to see if the swirl marks have been removed. Repeat the process as needed. If the swirl marks are still present, repeat the process until they are removed. Using a Polishing Pad to Remove Swirl Marks Using a polishing pad can be an effective way to remove swirl marks from your car's paint job. A polishing pad is a type of tool that is designed to remove imperfections and imperfections from the paint surface. Here are the steps for using a polishing pad to remove swirl marks: (See Also: How to Remove Vinyl Stickers from Car Window? Effortless Solution) Clean the paint surface: Before attempting to use a polishing pad, make sure to clean the paint surface thoroughly with a mild soap and water solution. Apply the polishing pad: Apply the polishing pad to the affected area and work it in using a circular motion. Use a buffer or polisher: Use a buffer or polisher with a clean and well-maintained pad to work the polishing pad into the paint surface. Inspect the paint surface: After completing the above steps, inspect the paint surface to see if the swirl marks have been removed. Repeat the process as needed. If the swirl marks are still present, repeat the process until they are removed. Common Mistakes to Avoid When Removing Swirl Marks When attempting to remove swirl marks, there are several common mistakes to avoid. By understanding these mistakes, you can increase your chances of successfully removing swirl marks and restoring your car's paint job to its former glory. Here are some common mistakes to avoid when removing swirl marks: Using the wrong polishing or buffing tool: Using the wrong polishing or buffing tool can create more swirl marks and damage the paint surface. Applying too much pressure: Applying too much pressure can create swirl marks and damage the paint surface. Using the wrong type of polish: Using the wrong type of polish can create swirl marks and damage the paint surface. Not cleaning the paint surface properly: Not cleaning the paint surface properly can create swirl marks and damage the paint surface. Recap Removing swirl marks from your car's paint job can be a challenging task, but it's not impossible. By following the right steps and using the right tools, you can remove swirl marks and restore your car's paint job to its former glory. Here are the key points to remember: Use the right polishing or buffing tool Apply the right amount of pressure Use the right type of polish Clean the paint surface properly Repeat the process as needed Frequently Asked Questions Q: What causes swirl marks on a car's paint job? A: Swirl marks are caused by the improper use of polishing or buffing tools, which can create a series of tiny scratches on the paint surface. Q: How can I prevent swirl marks from occurring? A: You can prevent swirl marks from occurring by using the right polishing or buffing tool, applying the right amount of pressure, using the right type of polish, and regularly maintaining your car's paint. (See Also: How to Remove Bird Stains from Car Paint? Easy DIY Solutions) Q: What is the best way to remove swirl marks from a car's paint job? A: The best way to remove swirl marks from a car's paint job is to use a high-quality polishing or buffing tool, apply the right amount of pressure, and use the right type of polish. Q: Can I use a clay bar to remove swirl marks from my car's paint job? A: Yes, you can use a clay bar to remove swirl marks from your car's paint job. A clay bar is a type of tool that is designed to remove contaminants and imperfections from the paint surface. Q: What is the best type of polish to use to remove swirl marks from a car's paint job? A: The best type of polish to use to remove swirl marks from a car's paint job is a high-quality polishing compound that is specifically designed for your car's paint type. Reddit and its partners use cookies and similar technologies to provide you with a better experience. By accepting all cookies, you agree to our use of cookies to deliver and maintain our services and site, improve the quality of Reddit, personalize Reddit content and advertising, and measure the effectiveness of advertising. By rejecting non-essential cookies, Reddit may still use certain cookies to ensure the proper functionality of our platform. For more information, please see our Cookie Notice and our Privacy Policy. Ok...I have buffer trails from the rotary in my car (honda civic = soft paint) its present even after using OP polis w/ LC white pad @ 1400rpm. I feel that i have worked the product completely, so im not sure as to why this is occurring. My question is this...should i pull out the DA and use XMT #1 of 360 to remove or use a softer pad with the rotary and OP polish? I'm asking b/c i want to know if switching to the DA will deminish some of the benefits you get when paint correcting with a rotary...or will the end result be the same? Thanks! i dont use a rotary, but you can remove it with xmt 360 and a white pad on your da..... You are going to need a finishing pad like the blue ccs pad. Also pick up some 3M Ultrafina and you will be fine. You should always finish with a finishing pad and polish, a white pad with a rotary is going to leave slight holograms. Reddit and its partners use cookies and similar technologies to provide you with a better experience. By accepting all cookies, you agree to our use of cookies to deliver and maintain our services and site, improve the quality of Reddit, personalize Reddit content and advertising, and measure the effectiveness of advertising. By rejecting non-essential cookies, Reddit may still use certain cookies to ensure the proper functionality of our platform. For more information, please see our Cookie Notice and our Privacy Policy. i had a weird thing happen to me today, i was polishing a panel and sprayed it with IPA 71% to help with getting the dust off. i wiped the panel with a MF towel, and theres holograms all over. funny thing is, theres holograms in places on the panel that i didnt even touch with the polisher. i take some m205, put it on a mf, and rub the area to see if they come out. i wipe up the residue, and now theres holograms EVERYWHERE that i touched with the MF towel and m205. i thought that maybe the MF is coarse or theres some contaminants in it that are doing the damage. so i get a LC green polishing pad (the one thats softer than the white LC pad), spray it with quick detailer, put some m205 on it and work the area by hand with the green pad. i wipe the area with a MF, 85% of the holograms are gone but theres still some left. i get the polisher back out, keep in mind that im using a DA, put on the green pad, spray it with QD, and use some m205. i work it at speed 3, moving the polisher relatively quick and with light pressure. i spray the panel with quick detailer, wipe up the residue, and theres still holograms. i dont get it. m205 is a finishing polish, why am i getting holograms? how do i get rid of them? this is the first time ive inflicted holograms into the paint, i think its the m205. or maybe that im spraying the pad with quick detailer first? before ive used ultimate compound on a white pad, and polised on a white pad and ive never gotten holograms before. help? what car are you working on? it could be one that has soft paint and the white pad might be too aggressive. You might want to try stepping down to an even finer polish to remove the holograms. what car are you working on? it could be one that has soft paint and the white pad might be too aggressive. You might want to try stepping down to an even finer polish to remove the holograms. its a 99 black honda civic. finer than m205? ive actually used ultimate compound(which is suppose to be pretty aggressive) with a white pad on it before and have had no holograms. its a 99 black honda civic. finer than m205? ive actually used ultimate compound(which is suppose to be pretty aggressive) with a white pad on it before and have had no holograms. From my understanding Honda paints are very soft. Now if you are removing the defects with M205 w/ White LC and you can remove the holograms with M205 w/ Green LC, go for it. It would be best to use a finer polish such as PO106FA or PO85RD with the Green pad. Also Ultimate Compound finishes down to almost LSP ready and M205 might not finish down as good as UC. interesting...i might go back with UC and a white pad and see if that takes care of them. the m205 and a green LC still leaves holograms for some reason even though green is pretty soft. now that i remember, i used m105 on an orange pad followed by m205 on white yesterday on a different panel with no holograms whatsoever. im starting to think that maybe this panel was repainted with some really soft paint, i really dont understand why this is happening. isnt UC a smat product? i thought it doesnt finish down at all and the abrasives stay the same size. this is from the link below: "SMAT - Super Micro Abrasives Technology Super Micro Abrasives are as the name states microscopic in size and do not break down like diminishing abrasives. While they may not breakdown like a diminishing abrasive, there does come a point where there effectiveness falls off in performance, my guess is that this is a cumulative effect of the base formula they are embodied in dissipates while particles of removed paint build up in the residue adulterating or diluting their effectiveness. " im confused i had a weird thing happen to me today. i was polishing a panel and sprayed it with IPA 71% to help with getting the dust off. i wiped the panel with a MF towel, and theres holograms all over. funny thing is, theres holograms in places on the panel that i didnt even touch with the polisher. i take some m205, put it on a mf, and rub the area to see if they come out. i wipe up the residue, and now theres holograms EVERYWHERE that i touched with the MF towel and m205. i thought that maybe the MF is coarse or theres some contaminants in it that are doing the damage. so i get a LC green polishing pad (the one thats softer than the white LC pad), spray it with quick detailer, put some m205 on it and work the area by hand with the green pad. i wipe the area with a MF, 85% of the holograms are gone but theres still some left. i get the polisher back out, keep in mind that im using a DA, put on the green pad, spray it with QD, and use some m205. i work it at speed 3, moving the polisher relatively quick and with light pressure. i spray the panel with quick detailer, wipe up the residue, and theres still holograms. i dont get it. m205 is a finishing polish, why am i getting holograms? how do i get rid of them? this is the first time ive inflicted holograms into the paint, i think its the m205. or maybe that im spraying the pad with quick detailer first? before ive used ultimate compound on a white pad, and polised on a white pad and ive never gotten holograms before. help? Try speeding the machine up to 4.5 and slow down your arm speed considering. What I have highlighted above is a sure fire way to instil buffer marks. While 205 is a finishing polish, it still has abrasives in it and if dragged across the paint quickly at a low machine speed the abrasives haven't been given sufficient time to do what they are designed to do which is polish the paint to a high gloss. I think Dave's nailed this one...rops: For some reason many feel running the machine at a slow speed and moving it at a higher rate of speed across the panel is preferable but it's not. Polishes generally perform best between 5 and 6 give or take a few and the pad should rotate during the process. A slow arm speed will give the pad and product time to work properly removing the surface defects as it was designed. Use a criss-cross pattern and do a 2" X 2" section at a time and you should see significant improvement. Ensure that the Microfiber towels you're using are clean and soft. Use clean water or mineral spirits to wash the panel or section to evaluate your progress. keep in mind that im using a DA, Holograms are another term for rotary buffer swirls. It's the 3D effect that makes the "pattern" caused by the direction a rotary buffer is moved over the paint to look like the swirls are floating in the paint. Like this, DISO = The Dealership Installed Swirl Option DISO = Dealer Installed Swirl Option Here's a few shots taken in the sun. Note how the swirls in the paint closest to the windshield have an almost floating or 3D effect, this is where the term hologram comes from in the context of talking about swirls instilled by a rotary buffer. Here's a section of the above photo cropped out and in full size... Often times you'll hear or read about "Holograms" or "Buffer Trails". These are both interchangeable terms for Rotary Buffer Swirls. If you look at the below swirls they almost seem to have a 3D or floating in the paint affect, this is the appearance characteristic from which we get the word hologram. You can leave a pattern in paint using a DA Polisher but it's not exactly the same thing as swirls inflicted into the paint by a rotary buffer like you see above. This topic comes up often enough I wrote an article about it with pictures... The difference between Rotary Buffer Swirls, Cobweb Swirls and Micro-Marring On soft paints, M205 doesn't always finish down perfectly. Try the finishing polish we used on both of these cars... Pinnacle Advanced Finishing Polish, it really finishes down nice... :xyxthumbs: do not use light pressure. Sonax nano technology paint cleaner!! Absolutely amazing for soft paints as a finishing polish!!!! Speed 4 with a finishing pad!!!! thanks for the replies :d1thumb2: well it seems like the MF towels that im using are leaving one-directional swirls(since i was wiping in one direction), which is why i thought they were buffer trails/holograms. weird, i dont think theyve left any marring before, at least i didnt notice any. just now i washed them 3 times in the washing machine and put in a little fabric softener to try and save them. ill probably end up buying new ones anyways...awesome :xyxthumbs: I don't think you are suppose to use fabric softener on MF's. I think it makes them worse.. yeah ive heard that before, but decided theyre going to be my interior MFs anyways. they got ever-so-slightly softer and smell like downy. :xyxthumbs: Swirl marks are nothing more than micro marring. Actually, under a microscope, they appear to be scratches. In any case, they'll soon be gone from your paint's surface! But first, have you ever noticed that you can't feel swirl marks with your fingers or finger nail? That's because they are very fine which means this common type of imperfection is not difficult to remove. What Exactly Causes Swirl Marks? A high-speed buffer works wonders for heavy oxidation or minor scratches, but many professional car detailers do not have sufficient training or enough experience to use the tool properly. While trying to blend touch-ups to perfection, the result is often uniform buffing pad marks in the paint. This entirely avoidable after-effect is called paint holograms or buffer trails. That's probably not your problem though! Truth be told, you may be creating swirl marks every time you wash or wipe down your car. Hey it happens! In fact, this is actually the most common cause of micro marring. And the severity depends on your tools, but also how you use them and the contaminants present. Swirl marks and other micro marring show up prominently on black and other dark colors because the sides of the marring reflect light. When you polish, the edges are rounded and reduce reflection. This diagram shows what severe micro marring looks like in a cross section of paint. 10 most frequent causes of swirl marks: Polishers/buffers with the incorrect pad or an untrained operator. Harsh polishing compounds and paint cleaners. Towels and applicators containing polyester threads. A dirty chamois or a chamois that hasn't been maintained. Wiping down a dusty or dirty car with a dry towel. A dirty car duster or a car duster used on a car with too much surface dirt. Not keeping your wash mitt or sponge properly rinsed. Automated car washes with brushes and other wipers. Not rinsing your car completely before washing, or not washing your car thoroughly before drying. Using a car cover when the car or the cover is not clean. It's not difficult to see what the problem is here! Here's Where You Will Find Swirl Marks Typical areas for swirl marks are the hood and trunk. On dark-colored cars, they may also show up on the doors and fenders. Bright colors do not show swirl marks as much (because they reflect more light). Of course, all colors are susceptible to swirl marks; they're just easier to see on dark colors. Black is the worst when it comes to swirls and other imperfections. So, what should be done? The Best Way To Handle Swirl Marks You simply remove swirl marks by polishing the paint. But polishing out swirl marks without an electric car polisher is a lot of work. Your results will also be limited. Here's the solution: Get a good dual-action car polisher. I highly recommend the Porter Cable 7424XP. It's an excellent car polisher and the most reliable. Swirl marks and hazing are no longer visible after buffing and polishing. The paint surface also has a deep, wet look. This is a great job thanks to a Porter Cable 7424 polisher. Understand that dual-action polishers are NOT the same as high-speed buffers. Orbital (random orbit) polishers cannot damage your car's paint or create more swirls! There's no need to be intimidated. See our comprehensive Car Polisher Buyer's Guide if you're not familiar with dual-action car polishers. Already have the right tools? It generally takes two passes to make your car's paint look new again. So easy! On the first pass you use a fine-cut compound. Go with Meguiar's Ultimate Compound. On the second pass it's a finishing polish. Use Klasse All-In-One or Meguiar's M205 Mirror Glaze Ultra Finishing Polish. These will restore full gloss and a wet-look shine. You will be pleased. Get a Good Kit and Quit Worrying My friends, there are some great car polisher kits. Pinnacle Twins & Porter Cable 7424XP Kit or the Wolfgang Duo & Porter Cable 7424XP Kit are both excellent. Be sure to get something that comes with all the necessary pads and polishes to get the job done right! Up next in our Paint Repair Clinic series: How-to Remove Clearcoat Scratches! The sad story: Dealer washed my Grand Cherokee and put a couple of scratches on the hood (my 1st. mistake here! I always tell them not to wash it but I forgot this time) and that pissed me off when I went to pick it up so they said don't worry we'll remove the scratches right away (my 2nd mistake! I shouldn't let them touch it again).. So they took it back inside the workshop and by the time I got there to see what they're doing, their "detailer" had already finished his job! he just hacked it with his Rotary and huge wool pad.. I checked the hood and it looked ok, it was smooth and scratches were gone but next day while parked under sunlight I noticed the buffer trails! It's on a small section only 2x1' The question: Is it possible to remove the buffer trails by hand? What I have: EZ Grip Hydro-Tech Hand Applicators Pinnacle Polishin' Pal Combo Microfiber Applicator Pad Wolfgang Uber Compound Wolfgang TSR Optimum Finish Polish TIA Feed back please Photos of the damage? Good chance you'll need a machine. \*No polisher (PC) means you've got your work cut out for you...But it can be done! \*Time consuming process. \*Afterwards: There should be a noticeable improvement in the musculature of your shoulder(s). \*I like your choices in product applicators. Good luck! Bob Small area so not too bad. You can easily do that by hand using a compound and a small pad then use a polish. All by hand. Meguiar's UC works wonders in a situation as you have. Lucky it wasn't the entire car that was damaged. Good luck. Sent from my LG-D900 using AG Online Sorry to hear about the hackdamage to your ride at the dealer. I dropped mine at the dealer yesterday and then was shuttled back to work by a young man that does the washing of customers cars. I asked extensively about the washing process they use (i've experienced what you have before). They either put it in a machine 95% to hack it up or hack it by hand. I made them write NO WASH on my ticket with a thick black magic marker. Can't miss that...well, maybe not. hopefully not. . . . . They're gonna wash my car..... That stinks man, good luck! I am hoping I've already instilled "crazy OCD costumer" enough in my new dealership that they will NEVER touch my car. I of course will also tell them and leave a giant poster in it to not do so when the time comes for service :xyxthumbs: Thanks guys, I'll try working it by hand next weekend and if that didn't do, I'll take it to a detailer who knows how to use his machines and products... Till then I'll try to avoid parking under sunlight so I won't see that little disaster! I really hate that dealer, the service manager and advisors are very nice to me even though I'm OCD and a PITA to them but the technicians and workers inside their workshop are just a bunch of reckless idiots.. I favor non-diminishing polishes when working by hand. I don't feel like they breakdown well by hand Both Uber and TSR are DAT I would try the TSR by hand. Work it with some "Passion Behind the Pad". Read Mike Phillips thread on polishing by hand first. If that does not work, I would grab some Meguiar's Ultimate Polish and give that a go